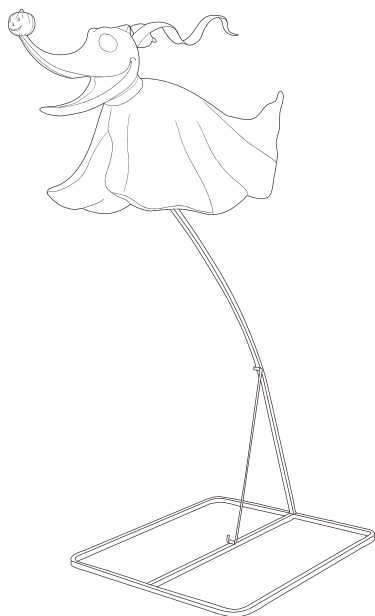


USE AND CARE GUIDE

4.5 FT (1.37 M) LED ZERO



Questions, problems, missing parts? Before returning to the store, please have a copy of your receipt ready and email the SVI customer experience team (customerservice@svius.com) within 90 days of the date of purchase or call Home Accents Holiday Customer Service 8 a.m. - 7 p.m., EST, Monday - Friday, 9 a.m. - 6 p.m., EST, Saturday

1-855-HD-HOLIDAY (1-855-434-6543)  
HOMEDEPOT.COM

Disney  
TIM BURTON'S  
THE  
NIGHTMARE  
BEFORE  
CHRISTMAS

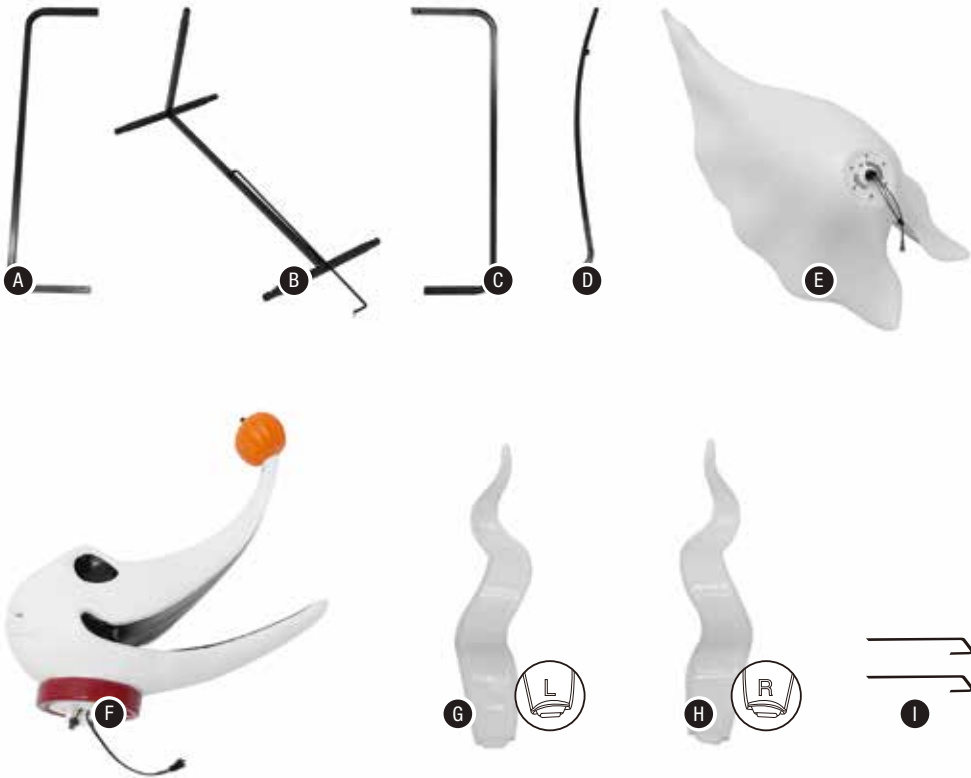
©Disney  
www.disney.com

IMPORTANT TIPS:

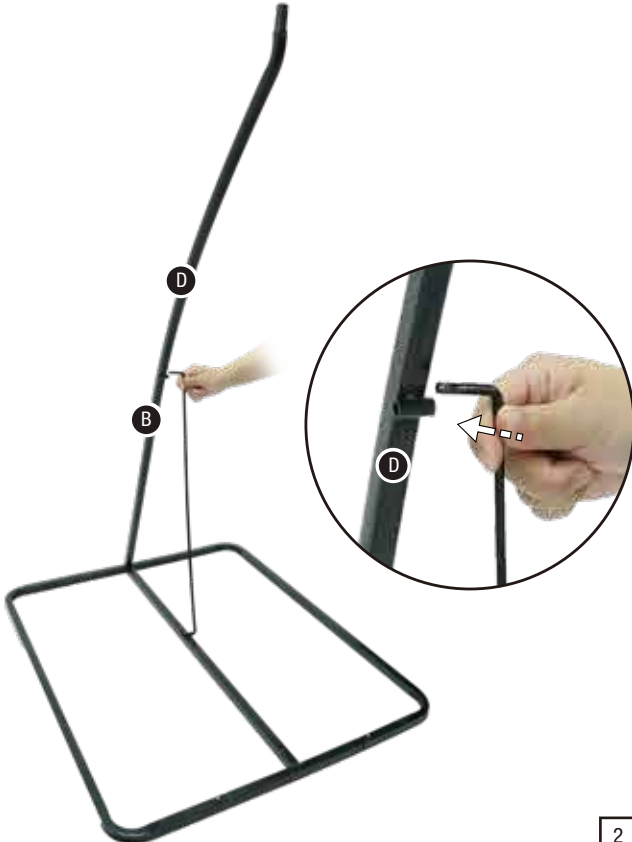
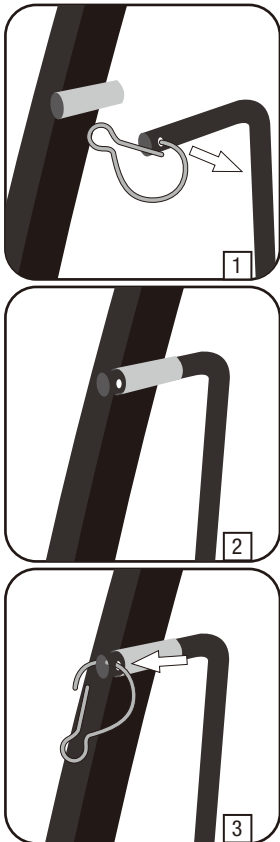
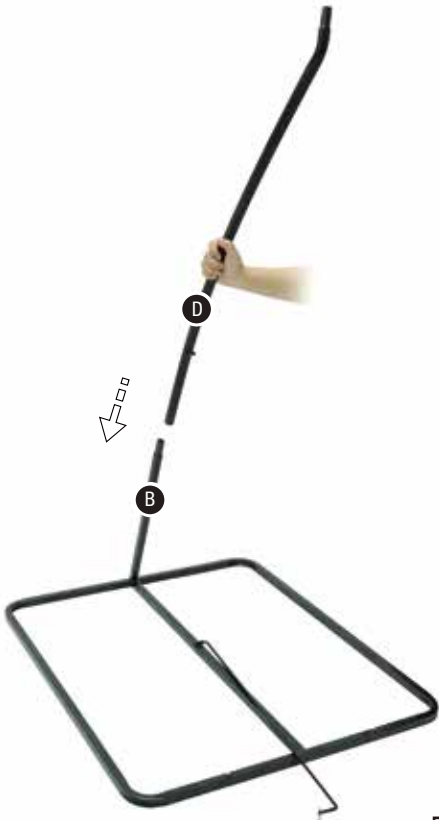
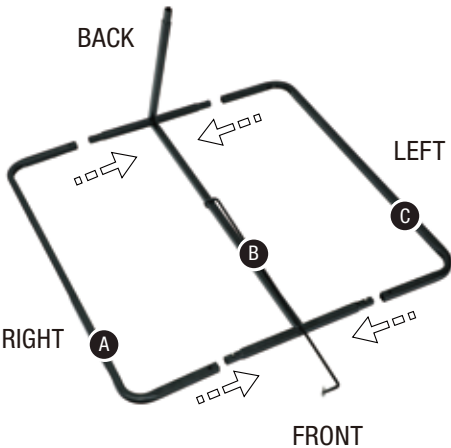
- Ensure that the item has fresh batteries (4 x 1.5V C batteries) of the same kind.
- Ensure that the batteries are inserted at the correct polarity.
- Ensure that the switch on the function control box is on the desired setting.
- If not functioning properly (ex: doesn't light up), ensure that cables are connected to their corresponding cable as shown in the instruction sheet.
- Ensure that the floor or surface that the item sits on is flat and level.

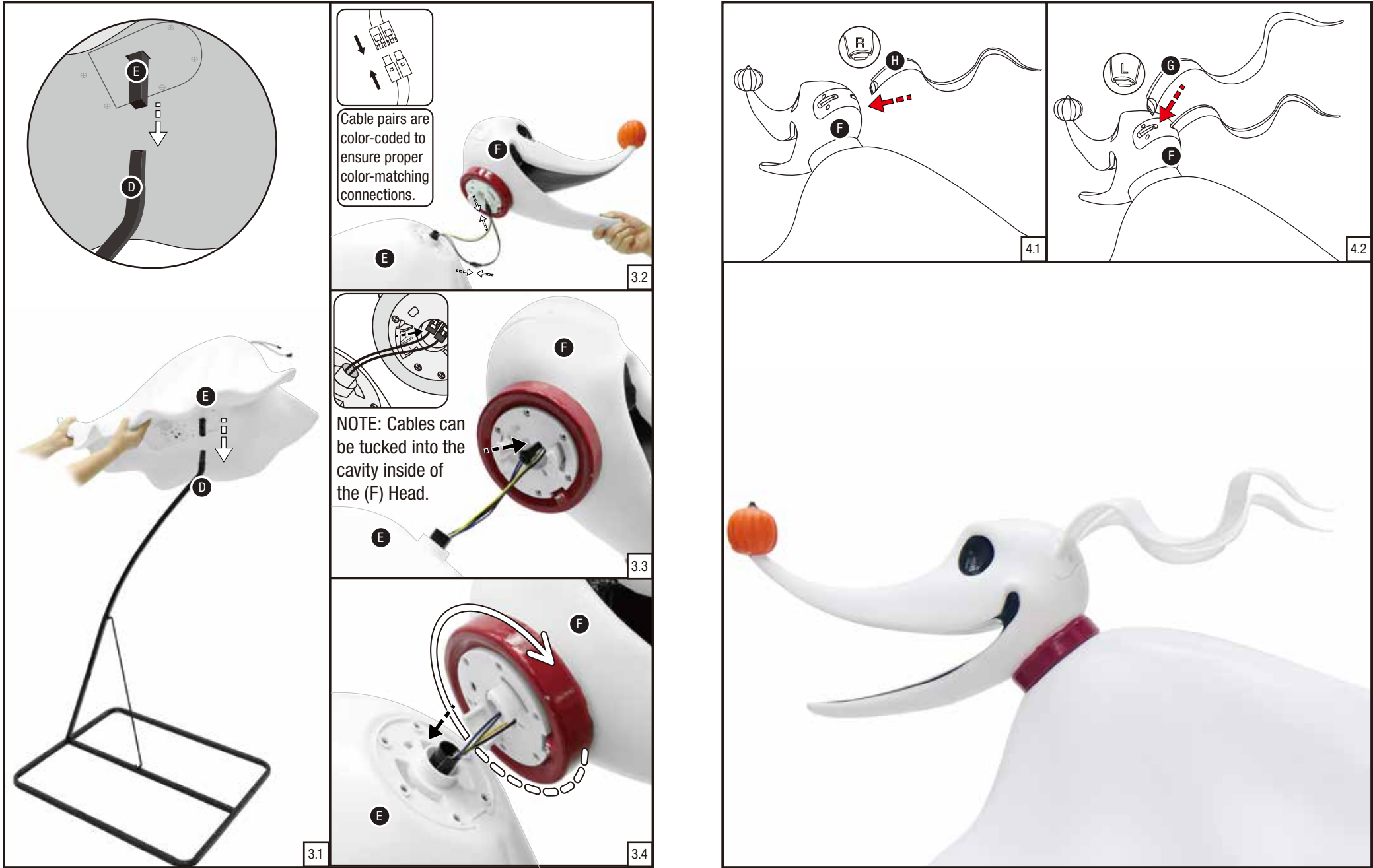
PARTS LIST

- A. Right Base x 1
- B. Middle Base x 1
- C. Left Base x 1
- D. Support Pole x 1
- E. Body x 1
- F. Head x 1
- G. Left Ear x 1
- H. Right Ear x 1
- I. Stakes x 2



NOTE: Throughout the instructions, Right and Left are from the character's point of view.



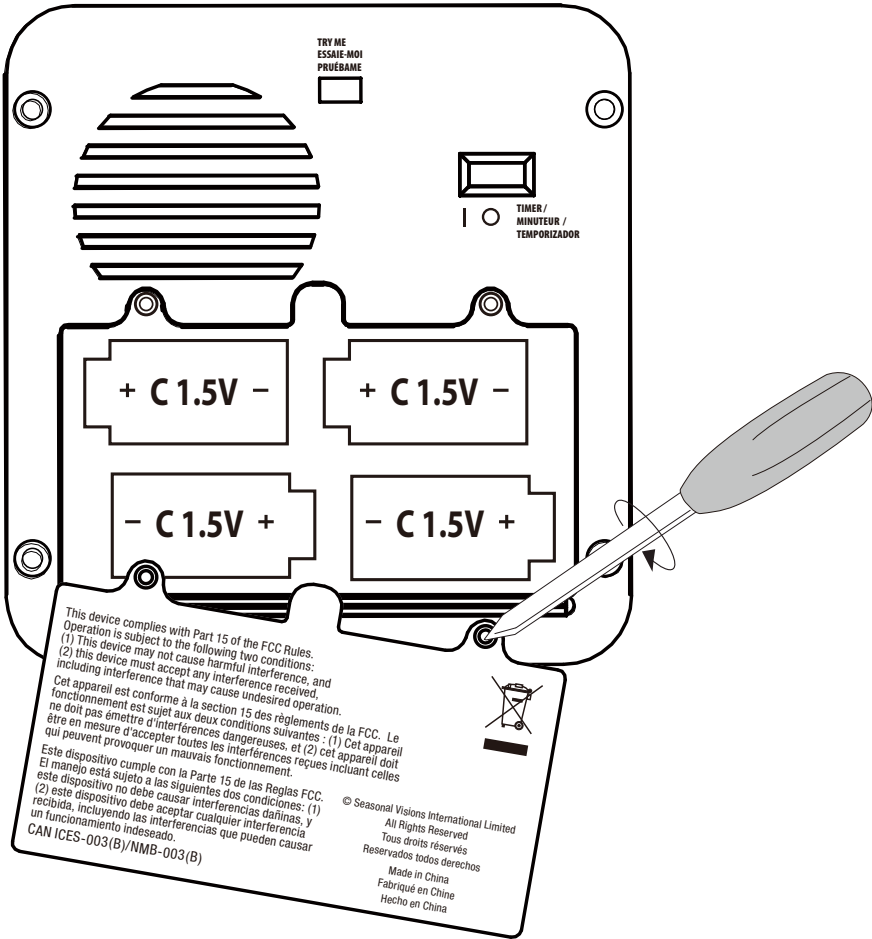


**OPERATION INSTRUCTIONS:**

The 4.5ft (1.37 M) LED Zero is powered by 4 C batteries. Insert 4 x 1.5V C batteries into the battery box. To turn on Zero, slide the switch underneath the (E) Body to the desired setting (I, TIMER). Slide the switch to the 0 position to turn the item off.

I	Lights ON.
O	Lights OFF.
TIMER / MINUTEUR / TEMPORIZADOR	This setting will activate the lights of the item for 6 hour cycle. The item will then deactivate and reactivate again 18 hours later.

**4.5FT (1.37 M) LED  
ZERO IS NOW FULLY  
ASSEMBLED. INSERT  
FRESH BATTERIES AND  
TURN ON TO LET THE  
FUN BEGIN!**



**WARNING**

This item is not a toy and should be used for decoration only. This item contains small parts that can be a choking hazard. Keep all plastic and wire parts away from children.

- 1. Please assemble item according to instructions.
- 2. Children should be supervised by adults. Item should not be grabbed, as it becomes a tipping hazard.

Please view all instructions carefully before assembling. Save this instruction sheet for future reference.

**CARE AND STORAGE INSTRUCTIONS**

When not in use, store this product in its original packing. Keep away from heat and moisture.

**FOR INDOOR/OUTDOOR USE**

**BATTERY REPLACEMENT INSTRUCTIONS**

Requires 4 x 1.5V C batteries (Not Included)

\* You will need a small screwdriver (Not Included).

Locate the battery compartment on the product. Remove the battery compartment cover by using a small Phillips head screwdriver to unscrew the screw. After removing or installing the batteries, place the battery compartment cover into position, and secure the battery cover. DO NOT overtighten screws.

Do not mix alkaline, standard (carbon-zinc), or rechargeable (nickel cadmium) batteries. Do not mix old and new batteries. Rechargeable batteries to be removed from the product before being charged. Only batteries of the same or equivalent type as recommended are to be used. Rechargeable batteries are only to be charged under adult supervision. Non-rechargeable batteries are not to be recharged. Batteries are to be inserted with the correct polarity. Remove batteries if exhausted or if product is to be left unused for a long time. The supply terminals are not to be short-circuited. Dispose of batteries safely. DO NOT DISPOSE OF BATTERIES IN FIRE, BATTERIES MAY EXPLODE OR LEAK

This device complies with Part 15 of the FCC Rules. Operation is subject to the following two conditions: (1) This device may not cause harmful interference, and (2) this device must accept any interference received, including interference that may cause undesired operation.

**CAUTION:** Changes or modifications not expressly approved by the party responsible for compliance could void the user’s authority to operate the equipment.

**NOTE:** This equipment has been tested and found to comply with the limits for a Class B digital device, pursuant to Part 15 of the FCC Rules. These limits are designed to provide reasonable protection against harmful interference in a residential installation. This equipment generates, uses, and can radiate radio frequency energy and, if not installed and used in accordance with the instructions, may cause harmful interference to radio communications. However, there is no guarantee that interference will not occur in a particular installation. If this equipment does cause harmful interference to radio or television reception, which can be determined by turning the equipment off and on, the user is encouraged to try to correct the interference by one or more of the following measures: Reorient or relocate the receiving antenna, Increase the separation between the equipment and receiver. Connect the equipment into an outlet on a circuit different from that to which the receiver is connected. Consult the dealer or experienced radio/TV technician for help.

CAN ICES-003(B)/NMB-003(B)



©Disney  
www.disney.com

Questions, problems, missing parts? Before returning to the store, please have a copy of your receipt ready and email the SVI customer experience team (customerservice@svious.com) within 90 days of the date of purchase or call Home Accents Holiday Customer Service 8 a.m. - 7 p.m., EST, Monday - Friday, 9 a.m. - 6 p.m., EST, Saturday

**1-855-HD-HOLIDAY (1-855-434-6543)**

**HOMEDEPOT.COM**